

4	306.5	307.00	96°27'	+1°00'	5.3	15
"	312.8	320.00	110°30'	-8°42'	47.7	16
"	360.	360.00	97°35'	+0°58'	5.9	17
"	357.2	363.00	110°14'	-7°14'	45.3	18
"	436.9	437.00	102°57'	+0°35'	4.6	19
"	419.8	423.00	111°04'	-5°10'	38.0	20
" - 5		243.00	95°04'			
5 -		457.50	91°10'			
5 -			341°08'			

15-16

17-18

19-20

4410.10

4357.10

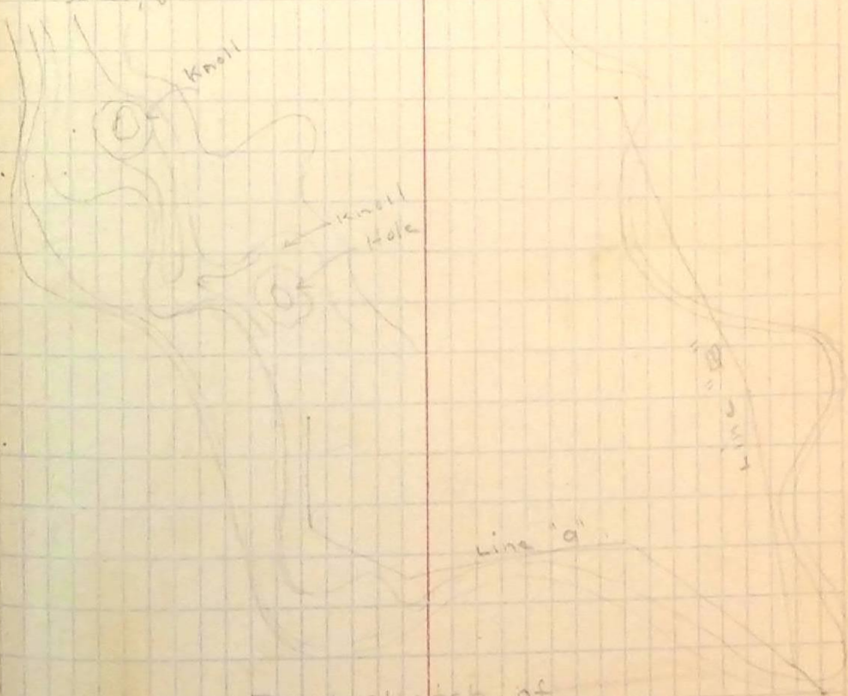
4410.70

4359.50

4409.40

4366.80

to fence, can fence since East & South
to sta. 8 line "a"



Rough sketch of
Contours